

Sea Breeze

Fabrics:



Bamboo



Lagoon

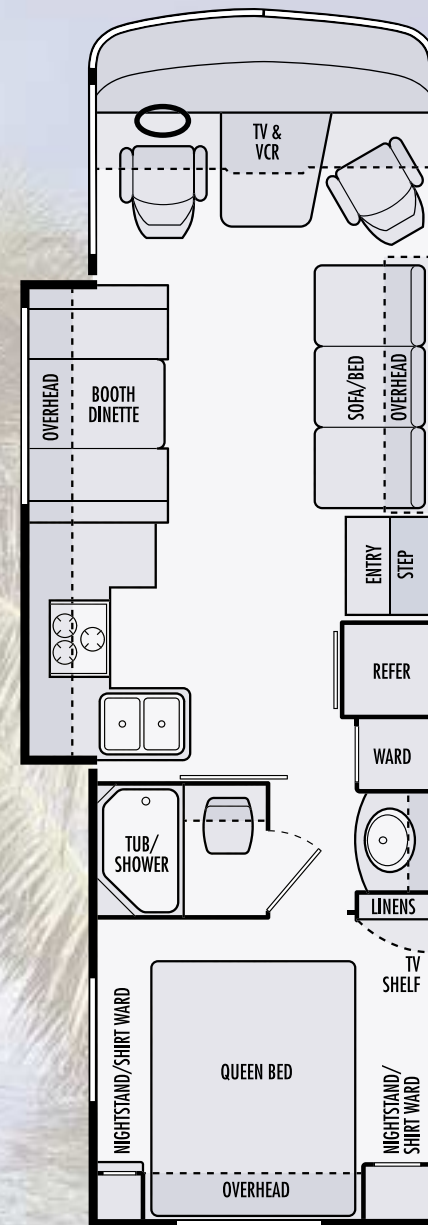


Sierra Brown

Woods:



Oak



SB300

Exterior Graphics:



Blue Lagoon



Due to continued product improvement, National R. V., Inc. reserves the right to change materials, colors, specifications and prices at any time without notification. Copyright © 2002 by National R. V., Inc. 03/02

SEA BREEZE FEATURES & SPECIFICATIONS

CHASSIS SPECIFICATIONS	FORD
Chassis	Ford® Super Duty (22,000 GVWR)
Tires	Goodyear® RV 245/70R 19.5F
Wheels	19.5X6, 8-lug steel, SS liner
Brakes	Hydro-Boost, 4-wheel disc ABS
Drive Axle gear Ratio	5.38:1
Alternator	115 Amp
Chassis Batteries	(1) 750 CCA
Shock Absorbers	Tuned Bilstein®
Fuel Capacity	75 gallons
Hitch Capacity	5,000 lbs. Class III
Chassis Warranty	3 years/36,000 miles
Engine	Ford® Triton V-10
Displacement	6.8 liters (415 cu. in.)
Peak Horsepower	310 HP @ 4,250 RPM
Peak Torque	425 lb.-ft. @ 3,250 RPM
Engine Warranty	3 year/36,000 miles
Transmission	Ford® 4R100
Transmission Type	4-speed automatic overdrive
Transmission Warranty	3 years/36,000 miles

BODY CONSTRUCTION

Duraframe® patented steel sub floor construction
 Steel framed crowned laminated fiberglass roof
 Steel framed laminated fiberglass walls
 Front and rear molded fiberglass caps
 Fiberglass front molded bumper
 High impact Centrex® rear bumper
 Full panoramic tinted windshield
 Soft fabric ceiling material
 Electric slide-out room with overhead cabinets
 Insulated fiberglass exterior compartment doors with integrated paddle latches and gas struts
 Steel framed exterior storage compartment with insulated bottoms
 Lighted storage compartments and service area
 Exterior assist handle
 Awning rail/rain gutter with drip spouts
 Automotive undercoating as required
 Aluminum rear ladder
 Custom vinyl exterior graphics

COCKPIT FEATURES

AM/FM stereo and CD with four speakers
 Driver and passenger map light with switch on dash
 Custom dash with full gauge package
 Convenience tray
 Audible turn signals
 Pantographic windshield wipers
 Power steering
 Cruise control
 Tilt steering wheel
 Rear view mirrors with convex
 Driver and passenger recliner seats

Passenger work station with 12V/120V receptacle and telephone jack in console
 Aviation style sun visors
 Generator hour meter and auxiliary start switch on dash
 Wraparound privacy curtain with easy reach wand

APPLIANCES & ACCESSORIES

6 cu. ft. double door refrigerator
 21" high output three-burner range with oven (surface mounted)
 Over-the-counter mount microwave with built-in range hood, lights and fan
 Systems monitor panel
 Cable TV hook-up and telephone jack
 TV antenna
 19" color TV with remote control in living area
 Video control box with antenna booster

INTERIORS

Throughout Coach

Solid oak cabinet doors and drawer fronts
 Telestrut hardware on overhead doors and positive catches on others
 Ball bearing roller drawer guides

Living Area

72" Wonder-bed® sleeper sofa
 Booth dinette
 Nylon carpet and pad
 Mini blinds
 Solid oak raised panel cabinet doors in overheads

Kitchen Area

Sink cover (wood cutting block)
 Porcelain sink with single lever faucet
 Waste basket
 Armstrong® vinyl flooring

Bath Area

Decorative opaque shower glass etching
 Flat panel doors
 Laminate lavy top with woodgrain edge
 Medicine cabinet
 Towel bars

Bedroom Area

Deluxe nylon carpet and pad
 Venetian mini-blinds with valances
 Solid raised panel cabinet doors
 Color coordinated bedspread, pillows and shams
 Radius padded headboard
 Laminate top nightstands with woodgrain edge

ELECTRICAL SYSTEMS & LIGHTS

30 Amp MagneTek® power converter and charger
 30 Amp 120V distribution panel and cord
 Onan® 4.0 kW MicroQuiet generator
 Two 6V deep cycle house batteries (217 amp/hour)
 Battery disconnect switch for house batteries
 Porch light with interior switch
 110V patio receptacle
 Incandescent lights in ceiling

Adjustable reading lights
 Designer lights in living and bedroom areas
 Cosmetic light in bathroom
 GFI protected electrical circuit
 Entry step light

PLUMBING & LPG SYSTEMS

Coach Exterior

Heated systems compartment with easy access to hook-ups
 On Demand water system and water pump
 Holding tank rinse system (black tank only)
 Winterization antifreeze inlet to pump
 Outside shower
 Water heater by-pass valve
 Pressurized water fill
 Six gallon LPG water heater with electric ignition (DSI)

Kitchen Area

Decorative kitchen and bath faucets

Bath Area

One-piece fiberglass tub/shower
 Glass shower door and enclosure

SAFETY FEATURES

Extra large double convex rear view mirrors
 Driver and passenger three point lap and shoulder seatbelts
 Deadbolt lock on entry door
 Fire extinguisher
 Smoke, carbon monoxide (CO) and LPG detectors
 Egress window

WINDOWS, DOORS & AWNINGS

Radius tinted safety glass windows (sliding windows in living area and jalousie windows in kitchen and bedroom)
 Manual Patio awning*
 Bedroom rear picture window
 Radius entrance door with clear glass, shade and screen door
 Power double entrance step with light and anti-skid
 Slide-out rooms topper awnings

VENTILATION

15,000 BTU roof A/C in living room
 35,000 BTU electronic ignition furnace
 Ducted heating system
 12V roof exhaust fan in bathroom
 Dash automotive heating and A/C system with defroster

OPTIONAL FEATURES

Coach Exterior

Rear back-up monitor
 12V attic fan with wall thermostat

Throughout Coach

Pleated day/night shades

Cockpit Area

JVC® Hi-Fi VCR with remote control (N/A with DVD option)
 JVC® DVD player (N/A with VCR option)

Multi disc CD changer
 Manual hydraulic leveling jacks with dash mounted controls

Kitchen Area

8 cu. ft. double door refrigerator
 Laminate countertop extension

Bedroom Area

13" color TV with remote

WEIGHTS (POUNDS)	SB300
Ford Chassis	
Gross Vehicle Weight Rating	22,000 lbs.
Gross Combined Weight Rating	26,000 lbs.
Front Gross Axle Weight Rating	7,000 lbs.
Rear Gross Axle Weight Rating	15,000 lbs.
Unloaded Vehicle Weight	14,890 lbs.
Maximum Carrying Capacity	7,110 lbs.
Cargo Carrying Capacity	5,859 lbs.
MEASUREMENTS	SB300
Wheelbase	208"
Overall Length	30' 11"
Exterior Height (Road Height)	11' 9"
Exterior Height (with Satellite)	12'
Interior Height	79 1/2"
Interior Width	98 1/2"
Exterior Width	102"
TANK CAPACITIES	SB300
Water Heater (Gas/Electric)	6 gal.
Gray Tank	40 gal.
Black Tank	40 gal.
Fresh Water Tank(s)	60 gal.
LPG Tank (Volume W.C.)	24.2 gal.

*Not available on CSA units